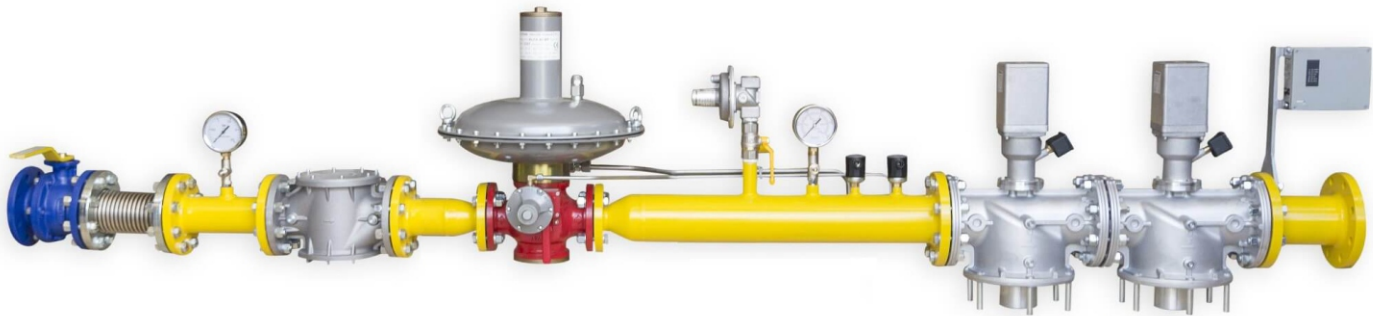


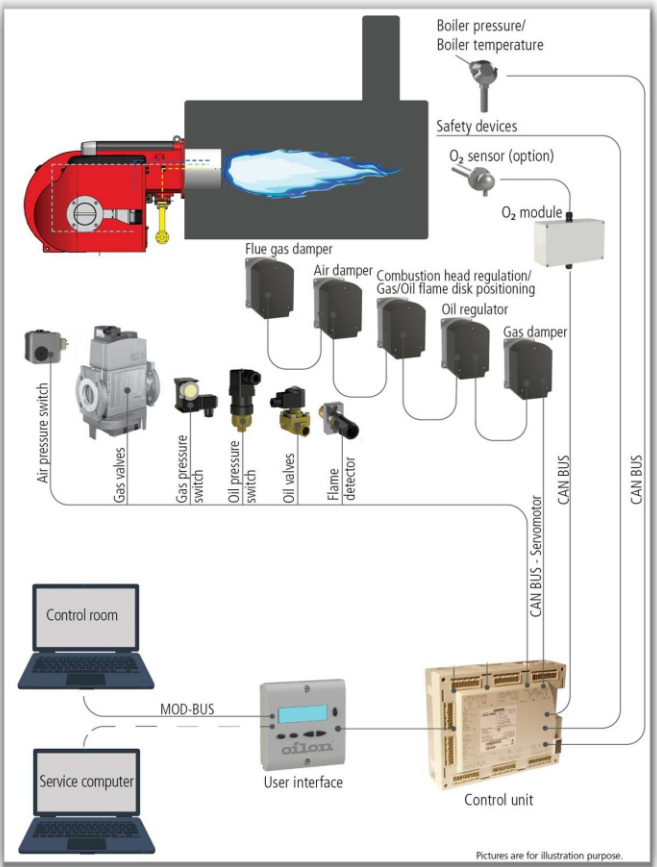
GAS-TRAIN



- Gas- train is a part of combustion system featuring the components that carry the fuel from network to burner.
- It consists of filter, shut-off valve, pressure regulator, safety relief valve and flame arrestor.

Burner Management System

- In this system separate servo motors are installed for air dampers, fuel regulator and combustion head control (optional) to optimize air flow pressure loss in the combustion head. The ratio between fuel, combustion air and air flow is adjusted electronically.
- This system also takes care of burner control and safety functions.
- It can be connected to external system via bus interface (Modbus, Profibus).
- On/off/step less modulation options are available.



Boiler Capacity (TPH)	Area Required (Meter)
0.5	4.5 x 2.5
0.75	4.5 x 2.5
1	4.5 x 3.2
2	4.5 x 3
3	6.1 x 3.2
4	6.2 x 3.6
5	6.3 x 3.7
8	8 x 5.3
10	9.5 x 3.6

OTHER OFFERINGS

- **CPP / IPP**
 - Powerpac Boilers
 - Atmospheric Fluidized Bed Combustion Boiler (AFBC)
 - Travelling Grate/ Dumping Grate/ Pulsating Grate/ Reciprocating Grate Boiler
 - Slop Fired Boilers
 - Waste Heat Recovery Boiler (WHRB)
- **Process Industrial Boiler**
 - Hypac- AFBC
 - Energypac- Grate Fired
 - Energypac Plus
 - Effypac – Manual/ Auto Fired

- **Retrofit & Spares**
 - Spares for Boiler Pressure Parts/ Non Pressure Parts
 - Spares for Fuel Feeding Systems
 - Structures
 - Autoclave Heating Units
 - Boilers Services
 - Annual Service Contract
 - Engineering and Operation audit of Boilers
 - O&M Services
 - RLA/ Health audit of Boiler
 - Pollution Control Equipment's
 - Electrostatic Precipitators (ESP)
 - Bag Filter
 - Cyclones
 - Wet Scrubber



CBL quality standards are inspected and certified by prestigious global agencies like:



CHEEMA BOILERS LIMITED

HEAD OFFICE :

D188, Sector 74, Mohali, Punjab (India)-160071
Tel: +91-172-5090 487, 5055 666, Fax : +91-172-5090 486
Email : marketing@cheemaboilers.com

SALES & SERVICES OFFICE :

Delhi NCR | Ahmedabad | Mumbai
Kolkata | Vijayawada | Chennai

Follow us on:   

Certifications and Accreditations

- ISO 9001:2015
- ISO 14001 : 2015
- ISO 45001:2018
- **ASME 'U' Certificate:** Manufacture Pressure Vessels
- **ASME 'S' Certificate:** Manufacture & Assembly of Power Boilers
- **ASME 'H' Certificate:** Heating Boilers except cast iron and cast aluminium

WORKS :

Banmajra, Kurali, Distt. Ropar, Punjab (India)
Tel: +91-160-5005 800-02

All accessories shown do not form part of standard supply | In view of our endeavour to improve the quality of our products, the company reserves the right to alter or change specifications without prior notice.

www.cheemaboilers.com



OIL GAS PAC

- ▶ Highly Efficient
- ▶ User Friendly
- ▶ Long Life



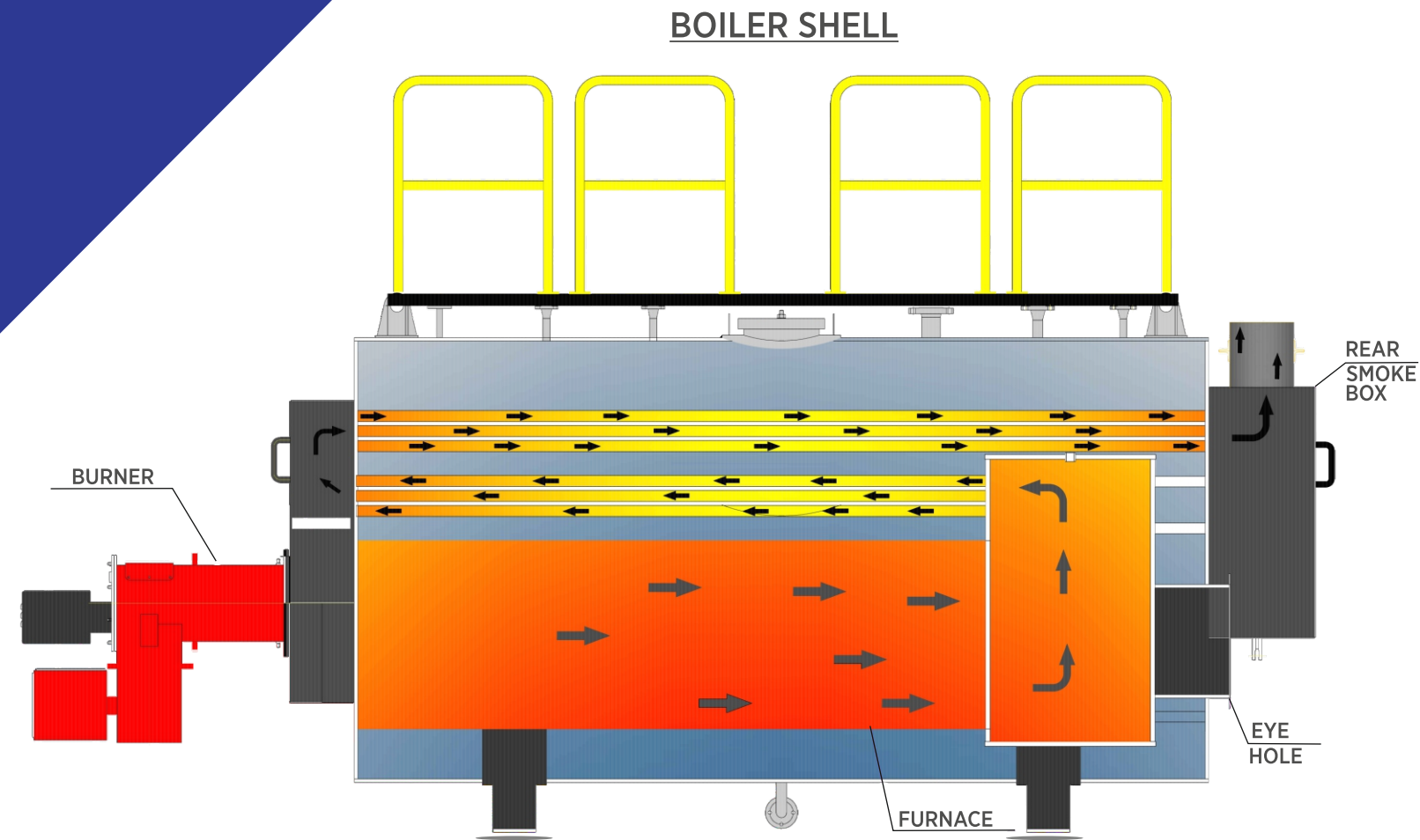
“CBL OIL/GASPAC is a three pass, wetback, fully packaged boiler designed to deliver high combustion and thermal efficiencies.”

CAPACITY
1 TPH to 35 TPH

PRESSURE
upto 24 Kg/Cm²

COMPATIBLE FUELS
Gas (CNG/LPG/PNG/Biogas/Natural Gas)
Oil (FO/HSD/LDO/LSHS)

EFFICIENCY
Overall 94% (+/- 1%)
on NCV (with economizer)



SUPERIOR DESIGN FEATURES

- 100% skid mounted plug and play boiler upto 35 TPH.
- Liberally size furnace helps in achieving higher combustion efficiency and longer life of boiler.
- Higher heating surface area/ low exit gas temperature ensures longer life of boiler.
- High dryness fraction of steam increases usable heat.
- Mono block/ Dual block burner options available.
- Large water holding capacity.
- Automation options for water flow, steam flow and water level are available as optional.

35 TPH GASPAC Boiler

GLOBAL PRESENCE

